

OMNIA
Smart Devices



ESSENTIALS Smart Wall Switch
Apagador Inteligente ESSENTIALS

OWS-B-US-L-1-2-3

Product Description

This switch is a product developed based on Wi-Fi and Bluetooth modules. It is compatible with the Tuya platform and features a single-live and neutral-live wire design. When no neutral wire is available, simply adding a capacitor allows for easy installation without rewiring, ensuring stable operation of this smart switch without worrying about noise from the capacitor. Users can control it locally or remotely by app, manually, or through smart speakers.

Warnings

1. Risk of Electric Shock:Electricity can cause personal injury and property damage if handled improperly.If you are not sure about any part of these instructions,please seek professional assistance from a qualified electrician.
2. Turn off the power at the circuit breaker and test that power is off before wiring.

Technical Parameters:

Model: OWS-B-US-L

Voltage: 90-240V AC, 50/60Hz

Max. Current: 8A/Gang/Total 8A

Wireless Protocol: Wi-Fi 2.4GHz

Frequency Band:2.412-2.484GHz

Maximum Radio Transmit Power: <+16dBm



Package list

Smart Switch *1
User Manual *1
Line Sequence

Screw *2
Wiring Cap *6
Panel*1

Installation

Note:

- Make sure that the power at the circuit breaker is off before wiring.
- Two versions available and optional: Neutral wire required and no neutral needed in your switch boxes to operate correctly. Please make the correct wiring according to the switch you purchased.
- If you buy a switch version that requires a neutral wire, please confirm your wall box contains a Neutral Wire (typically white). If the wall box don't have a Neutral Wire, please try another location at your home or call a professional electrician to install the switch.
- The wire colors indicated in this manual are the usual colors and may differ in some houses.
- Ensure the wire conductors are securely fastened to each wire.
- Ensure the Wi-Fi signal is steady and normally working before wiring .
- If you don't have any wiring experience, please call a professional electrician.

Step 1

- Turn off the circuit breaker and use the electrical tester to test the power.
- Ensure the circuit breaker is off before wiring.

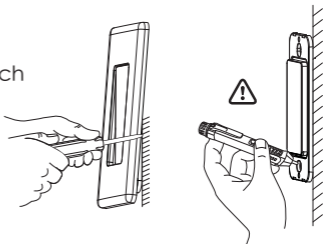


⚠ Attention:

Please disconnect the power supply before installing or removing the device for avoiding irreversible damage on the device from the electric current or some unpredictable problems such as lamp flashing.

Step 2

- Remove the old switch



Step 3

- Remove the switch and pull it away from the wall. Identify Line/Load Wire (Note: The color of your wire may be different from the color shown on the manual.)

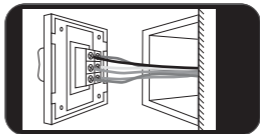
⚠ Verify power is off

- We recommend you remove the faceplate from the old switch and use an electrical tester to test all wires connected to the switch to ensure there is no voltage in the circuit.
- You may need to turn off more than one circuit breaker.



Step 4

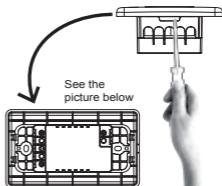
- Take pictures of the wiring



- Follow the wiring diagram to connect the switch wires to the wires in the wall box with the wire conductors. Please use the label stickers we provide to stick on the corresponding wires to prevent confusion in the wire sequence

Step 5

- Remove the panel with screwdriver (Please don't install with electricity power on)



Step 6

Two Wiring Options-Choose Based on Your Wall Box

Option 1: No Neutral Wire Installation (Use Capacitor)

1 Gang L1 and N line. 3 Gang L1 and N line.

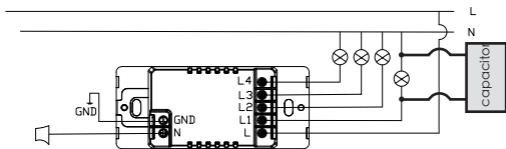
2 Gang L1 and N line. 4 Gang L1 and N line.

When to use this method:

Your wall box does not have a neutral wire (common in older homes).

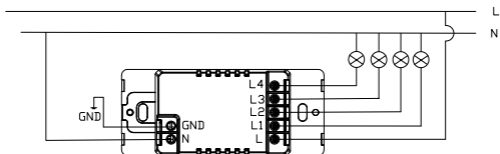
You must install the included capacitor at the light fixture L1 (not at the switch).





Single Live Wiring

Option 2: Neutral Wire Installation (No Capacitor)

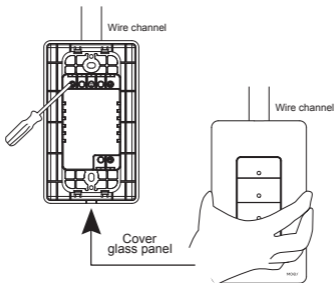


Neutral + Live Wiring

Step 7

- Put the switch into switch box in the wall
- Mount the two side screws
- Install the glass panel (install from up above)
- Finish installation





Download the SMART LIFE

① Download Smart LifeApp on App store or scan the QR code



② Registration or Log in.

- Download “Smart Lifea” Application.
- Enter the Register/Login interface; tap “Register” to create an account by entering your phone number to get verification code and “Set password” . Choose “Log in” if you already have a MOES account.

How to Reset/Re-pair WiFi Device

Long press the switch for 6 seconds until the white indicator on the switch flashes fast and the device will start the network connection

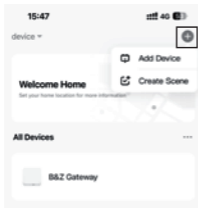
Wi-Fi link method

Complete the wiring of the switch module before pairing.

NOTE:

The switch only supports 2.4G network.If you have connected 5G network,please disconnect 5G network firstly and connect 2.4G network.

1. Scan the QR code to configure the network guide.



①



②

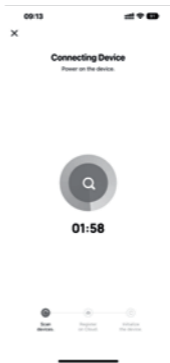
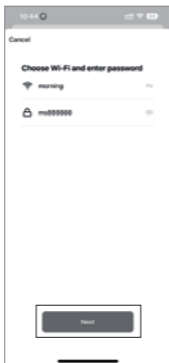


Scan the QR code



Please connect the device according to the configuration process.

2. Enter Wi-Fi Password and click “Next” , waiting for completing the connection.



3. Select the device you want to add and click “+” .

4. Add the device successfully, you can edit the name of the device to enter the device page by click “Done” .

5. Click “Done” to enter the device page to enjoy your smart life with home automation.



How to achieve multi-control association (only for N+L wire)

Note: Please confirm you have successfully finished the link method above for adding this switch to your MOES App before the association.

1. Add another smart switch to the same Smart Life App. (If there is a smart switch having been added before to the app, just go to next step.)

Note: if your switch requires a neutral wire, then there is no need to wire the new added switch to the light, only L and N are required for wiring. Then you can control 1 light with multiple switches in Smart Life App.


If your switch doesn't require a neutral wire, you need to follow the wiring instructions to connect the L and light. At this point, you can control the lights simultaneously

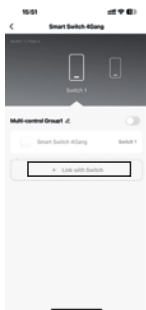
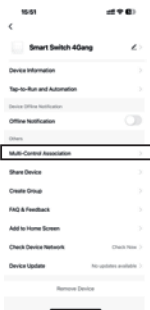


with multiple switches.

2. Then you will see two devices in the app and click the main switch (as one gang switch as below) by entering into the next operation.

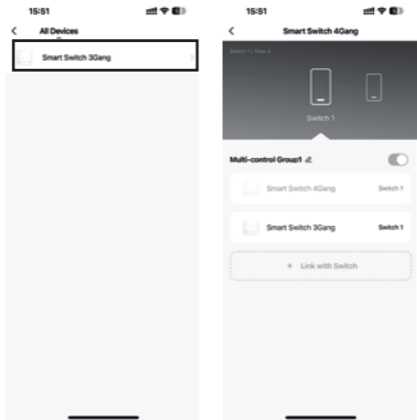


3. Click  in the upper right corner and choose Multi-Control Association, and then click “+” in the right corner.



4. Choose the switch that you want to associate to and then choose the switch button that you want to control the same light. Then go back to previous page, you will see two items in the page, one is your main switch, the other is the one you associate just now.

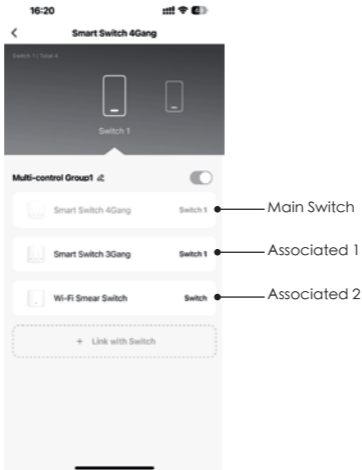
Note: Please confirm the associated switch is enabled.



5. Now you are able to control your light with two switches. Do not associate another button in the same switch for multi-control.

6. If you want to add another third or more smart switches to control your light, just repeat the steps above. And you will see the result as below when you associate another new switch.





Control your home with your voice

Devices are compatible with Amazon Alexa and Google Home supported functionalities.

WARRANTY & INSTRUCTIONS

Dear Sir or Madam, thank you for purchasing the product.

We hope you'll enjoy using it.

The warranty for the products in the warranty card is hereby granted as follows.



As a condition of using the warranty, you must comply with the following terms and procedures:

1. Products are covered by a 12-month warranty, effective from the date of purchase of the covered product by a retail customer.
2. In order to exercise warranty rights, the purchaser must present: a) Warranty card, b) Proof of purchase (VAT invoice, financial receipt or other document confirming the actual date of purchase), unless the purchase date of the product comes from the warranty card.
3. If product quality problems occur within 12 months from the date of receipt, please prepare the product and packaging and go to the place or store where you purchased it to apply for after-sales maintenance. If the product is damaged due to personal reasons, a certain maintenance fee will be charged.
4. We recommend that you properly protect the goods when delivering them to the guarantor - for this purpose, we recommend that you use the original packaging with padding to ensure safe transportation. If you choose to use replacement packaging, we recommend that you ensure that the product is adequately protected from damage during shipping. We recommend that you place an appropriate sticker on your packaging indicating the product's susceptibility to impact, such as "Warning Glass".
5. Reported defects covered by the warranty will



be considered immediately and no later than 14 days from the date of delivery of the goods to the Guarantor.

6. After checking and determining the legality of the warranty claim, the Guarantor's services will repair the product within a reasonable time, not exceeding 30 days from the date of delivery of the goods to the Guarantor. However, if hard-to-find spare parts are required, this deadline may extend the time it takes to deliver the part from the manufacturer's factory.

7. The warranty does not include the performance of maintenance and similar operations specified in the user manual, and users are obliged to do it themselves.

8. If defects occur due to natural wear and tear during use, the warranty does not cover it.

RECYCLING INFORMATION

All products marked with the symbol for separate collection of waste electrical and electronic equipment (WEEE Directive 2012/19 / EU) must be disposed of separately from unsorted municipal waste. To protect your health and the environment, this equipment must be disposed of at designated collection points for electrical and electronic equipment designated by the government or local authorities. Correct disposal and recycling will help prevent potential negative consequences for the environment and human health. To find out where these collection points are and how they work, contact the installer or your local authority.





FCC compliance statement

FCC Compliance Statement for OWS-B-US-L

This device complies with Part 15 of the FCC Rules. Operation is subject to the following two conditions: (1) This device may not cause harmful interference, and (2) this device must accept any interference received, including interference that may cause undesired operation.

Note: This equipment has been tested and found to comply with the limits for a Class B digital device, pursuant to Part 15 of the FCC Rules. These limits are designed to provide reasonable protection against harmful interference in a residential installation. This equipment generates, uses, and can radiate radio frequency energy and, if not installed and used in accordance with the instructions, may cause harmful interference to radio communications.

However, there is no guarantee that interference will not occur in a particular installation. If this equipment does cause harmful interference to radio or television reception, which can be determined by turning the equipment off and on, the user is encouraged to try to correct the interference by one or more of the following measures:



- Reorient or relocate the receiving antenna.
- Increase the separation between the equipment and receiver.
- Connect the equipment into an outlet on a circuit different from that to which the receiver is connected.
- Consult the dealer or an experienced radio/TV technician for help.

This device complies with Part 15 of the FCC Rules. Operation is subject to the following two conditions:
(1) This device may not cause harmful interference, and
(2) this device must accept any interference received, including interference that may cause undesired operation.

Changes or modifications not expressly approved by the party responsible for compliance could void the user's authority to operate the equipment.

FCC Radiation Exposure Statement:

This equipment complies with FCC radiation exposure limits set forth for an uncontrolled environment. End users must follow the specific operating instructions

for satisfying RF exposure compliance. This transmitter must not be co-located or operating in conjunction with any other antenna or transmitter.



Manual de instalación (Español)

Parámetros técnicos:

Modelo: OWS-B-US-L

Tensión: 90-240V AC, 50/60Hz

Corriente máxima de salida: 8A/Gang/Total 8A

Protocolo inalámbrico: Wi-Fi 2.4GHz

Banda de frecuencia: 2.412-2.484GHz

Potencia máxima de transmisión de radio: <+16dBm

Advertencias

1. Riesgo de descarga eléctrica: La electricidad puede causar lesiones personales y daños materiales si se manipula incorrectamente. Si no está seguro de alguna parte de estas instrucciones, consulte a un electricista cualificado.
2. Desconecte el suministro eléctrico en el disyuntor y compruebe que esté desconectado antes de realizar el cableado.

Instrucciones de garantía

Estimado Señor o señora, gracias por comprar el producto.

Esperamos que le guste usarlo.

Se otorga la siguiente garantía a los productos en la tarjeta de garantía.

Como condición para el uso de la garantía, debe cumplir con los siguientes términos y procedimientos:

1. el producto goza de una garantía de 12 meses, que entrará en vigor a partir de la fecha en que el cliente minorista compre el producto cubierto.
2. para ejercer la garantía, el comprador debe presentar: a) la tarjeta de garantía, b) el certificado de compra (factura de iva, recibo financiero u otro documento que confirme la fecha real de compra), a menos que la fecha de compra del producto provenga de la tarjeta de garantía.
3. dentro de los 12 meses siguientes a la fecha de recepción del producto, si hay problemas de calidad del producto, prepare el producto y el embalaje y vaya al lugar de compra o tienda para solicitar el mantenimiento post - venta. Si el producto se daña por razones personales, se cobrará una cierta tarifa de mantenimiento.
4. la garantía no incluye:
 - a) los daños mecánicos causados por la negligencia del usuario y los defectos resultantes del producto.
 - b) daños causados por el uso inadecuado del producto.