

**OMNIA**  
Smart Devices



**GALAXY Smart Wall Switch**  
*Apagador Inteligente GALAXY*  
**OZS-SF-US 1-2-3-4**

## Product Description

This is an innovative 1-4 gang smart switch series that supports Zigbee protocol. It can realize smart control of indoor lighting and other equipment through mobile phone APP, voice assistant and touch operation, providing a whole house intelligent experience. The switch also has three levels of vibration feedback and indicator backlight to perfectly meet the user's humanized needs.

### Warnings

1. Risk of Electric Shock: Electricity can cause personal injury and property damage if handled improperly. If you are not sure about any part of these instructions, please seek professional assistance from a qualified electrician.
2. Turn off the power at the circuit breaker and test that power is off before wiring.



OMNIA

## Technical Parameters:

Model: OSFL01-Z/OSFL02-Z

Voltage: 90-250V AC, 50/60Hz

Max. Current: 10A/Gang; Total 10A

Wireless Protocol: ZigBee 3.0

Frequency Band: 2.412 ~ 2.484GHZ

Maximum Radio Transmit Power: < + 10dbm

## Installation

### Note:

- Make sure that the power at the circuit breaker is off before wiring.
  - Neutral Wire is required. Confirm the wall box contains a Neutral Wire (typically white). If the wall box don't have a Neutral Wire, please try another location at your home or call a professional electrician to install the switch.
  - The wire colors indicated in this manual are the usual colors and may differ in some houses.
  - Ensure the wire conductors are securely fastened to each wire.
- If you don't have any wiring experience, please call a



## Step 1

- Turn off the circuit breaker and use the electrical tester to test the power.
- Ensure the circuit breaker is off before wiring.



### ⚠ Attention:

Please disconnect the power supply before installing or removing the device for avoiding irreversible damage on the device from the electric current or some unpredictable problems such as lamp flashing.

## Step 2

- Remove the old



OMNIA

## Step 3

- Remove the switch and pull it away from the wall. Identify Line/Load Wire (Note: The color of your wire may be different from the color shown on the manual.)

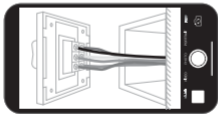
### Verify power is off

- We recommend you remove the faceplate from the old switch and use an electrical tester to test all wires connected to the switch to ensure there is no voltage in the circuit.

You may need to turn off more than one circuit breaker.

## Step 4

- Take pictures of the wiring

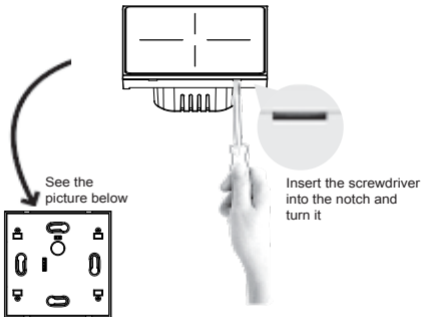


- Follow the wiring diagram to connect the switch wires to the wires in the wall box with the wire conductors.



## Step 5

- Remove the panel with screwdriver  
(Please don't install with electricity power on)

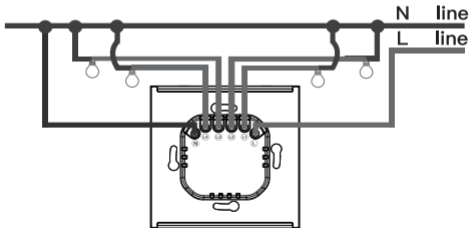


OMNIA

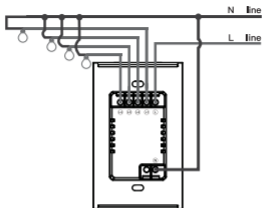
## Step 6

- Prepare to install wiring
  - A. Live wire connects "L" terminal
  - B. Neutral wire connects "N" terminal
  - C. Lamp wire connects "L1,L2,L3,L4" terminal
  - 1 Gang connects "L1" terminal
  - 2 Gang connects "L1,L2" terminal
  - 3 Gang connects "L1,L2,L3" terminal
  - 4 Gang connects "L1,L2,L3,L4" terminal

EU 1-4 Gang

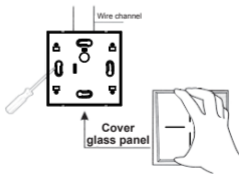


## US 1-4 Gang



### Step 7

- Put the switch into switch box in the wall
- Mount the two side screws
- Install the glass panel (install from up above)
- Finish installation



OMNIA

## Preparation for use

- 1 Download Smart Life App on App store or scan the QR code



## 2 Registration or Log in



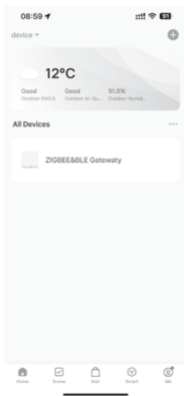
- Download “Smart Life” Application.
- Enter the Register/Login interface; tap “Register” to create an account by entering your phone number to get verification code and “Set password” .Choose “Log in” if you already have

## Steps for connecting the APP to the device

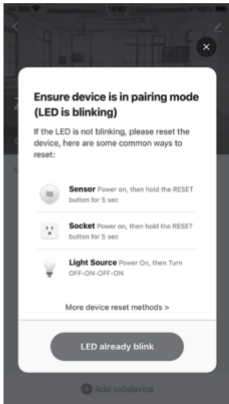
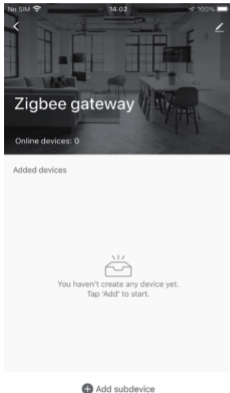
Ensure the device is within the effective signal coverage of your smart ZigBee gateway for successful connection into the ZigBee gateway in Smart Life.



1. Press and hold the switch touch button for 10s until the white indicator light at the bottom of the switch flashes, then, the device starts pairing.
2. Make sure your Smart Life has successfully connected to a Zigbee gateway.

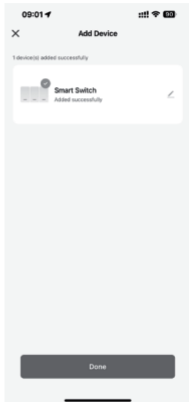
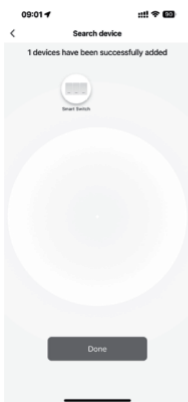


3. Enter the gateway. Please follow the picture below to finish as “Add subdevice→LED already blink, and the connecting will take about 10-120 seconds to complete depending on your network condition.



OMNIA

4.Add the device successfully, you can edit the name of the device to enter the device page by click “Done” .



5. Click “Done” to enter the device page to enjoy your smart life with home automation.



OMNIA

## How to reset/re-pair ZigBee code

Press and hold the switch touch button for 10s until the white indicator light at the bottom of the switch flashes, then, the device starts pairing.

## Control your home with your voice

Devices are compatible with Amazon Alexa and Google Home supported functionalities. Please see our step-by-step guide on: <https://www.moestech.com/blogs/news/smart-device-linked-voice-speaker>

## Declaration of conformity

The radio equipment type OSFL01-Z is in compliance with Directive 2014/35/EU, 2014/30/EU, 2011/65/EU, 2014/53/EU.



## FCC compliance statement

FCC Compliance Statement for OSFL02-Z

This device complies with Part 15 of the FCC Rules. Operation is subject to the following two conditions: (1) This device may not cause harmful interference, and (2) this device must accept any interference received, including interference that may cause undesired operation.

Note: This equipment has been tested and found to comply with the limits for a Class B digital device, pursuant to Part 15 of the FCC Rules. These limits are designed to provide reasonable protection against harmful interference in a residential installation. This equipment generates, uses, and can radiate radio frequency energy and, if not installed and used in accordance with the instructions, may cause harmful interference to radio communications. However, there is no guarantee that interference will not occur in a particular installation. If this equipment does cause harmful interference to radio or television reception, which can be determined by turning the equipment off and



OMNIA

on, the user is encouraged to try to correct the interference by one or more of the following measures:

- Reorient or relocate the receiving antenna.
- Increase the separation between the equipment and receiver.
- Connect the equipment into an outlet on a circuit different from that to which the receiver is connected.
- Consult the dealer or an experienced radio/TV technician for help.

This device complies with Part 15 of the FCC Rules.

Operation is subject to the following two conditions: (1) This device may not cause harmful interference, and (2) this device must accept any interference received, including interference that may cause undesired operation. Changes or modifications not expressly approved by the party

## WARRANTY INSTRUCTIONS

Dear Sir or Madam, thank you for purchasing the product. We hope you'll enjoy using it.

The warranty for the products in the warranty card is hereby granted as follows.

As a condition of using the warranty, you must comply with the 1.

Products are covered by a 12-month warranty, effective from



OMNIA

the date of purchase of the covered product by a retail customer.

2. In order to exercise warranty rights, the purchaser must present: a) Warranty card, b) Proof of purchase (VAT invoice, financial receipt or other document confirming the actual date of purchase), unless the purchase date of the product comes from the warranty card.

3. If product quality problems occur within 24 months from the date of receipt, please prepare the product and packaging and go to the place or store where you purchased it to apply for after-sales maintenance. If the product is damaged due to personal reasons, a certain maintenance fee will be charged.

4. We recommend that you properly protect the goods when delivering them to the guarantor - for this purpose, we recommend that you use the original packaging with padding to ensure safe transportation. If you choose to use replacement packaging, we recommend that you ensure that the product is adequately protected from damage during shipping. We recommend that you place an appropriate sticker on your packaging indicating the product's susceptibility to impact, such as "Warning Glass".

5. Reported defects covered by the warranty will be considered immediately and no later than 14 days from the date of delivery of the goods to the Guarantor.



following terms and 6. After checking and determining the legality of the warranty

claim, the Guarantor's services will repair the product within a reasonable time, not exceeding 30 days from the date of delivery of the goods to the Guarantor. However, if hard-to-find spare parts are required, this deadline may extend the time it takes to deliver the part from the manufacturer's factory.

7. The warranty does not include the performance of maintenance and similar operations specified in the user manual, and users are obliged to do it themselves.

8. If defects occur due to natural wear and tear during use, the warranty does not cover it.

9. The warranty does not cover:

a) Mechanical damage caused by the user's fault and product defects caused by such damage.

b) Damage caused by improper use of the product.

10. The rights under the guarantee will expire in the following circumstances:

a) Remove the warranty seal from the product.

b) Remove the serial number from the product.

c) Take action to eliminate physical defects in the product outside of authorized service.

d) Use non-original parts and consumables.



# RECYCLING INFORMATION

All products marked with the symbol for separate collection of waste electrical and electronic equipment (WEEE Directive 2012/19 / EU) must be disposed of separately from unsorted municipal waste. To protect your health and the environment, this equipment must be disposed of at designated collection points for electrical and electronic equipment designated by the government or local authorities. Correct disposal and recycling will help prevent potential negative consequences for the environment and human health. To find out where these collection points are and how they work, contact the installer



OMNIA

# Manual de instalación (Español)

## ⚠ Advertencias

1. Riesgo de descarga eléctrica: La electricidad puede causar lesiones personales y daños materiales si se manipula incorrectamente. Si no está seguro de alguna parte de estas instrucciones, consulte a un electricista cualificado.
2. Desconecte el disyuntor y compruebe que esté desconectado antes de realizar el cableado.

### Parámetros técnicos:

Modelo: OSFL01-Z/OSFL02-Z

Voltaje: 90-250 V CA, 50/60 Hz

Corriente máxima: 10 A/unidad; Total: 10 A

Protocolo inalámbrico: ZigBee 3.0

Banda de frecuencia: 2.412 ~ 2.484 GHz

Potencia máxima de transmisión de radio: < + 10 dBm

## Declaración de conformidad

Por la presente, Wenzhou NOVA New Energy CO., LTD declara que el equipo de radio SFL01-Z cumple con las Directivas 2014/35/EU, 2014/30/EU, 2011/65/EU y 2014/53/EU. El texto completo de la declaración EU de conformidad está disponible en la siguiente dirección de internet:

<https://www.moestech.com/blogs/news/sfl01-z>

OMNIA

# INSTRUCCIONES DE GARANTÍA

Estimado señor o señora, gracias por adquirir el producto. Esperamos que disfrute de su uso.

La garantía de los productos incluidos en la tarjeta de garantía se otorga de la siguiente manera.

Como condición para utilizar la garantía, debe cumplir con los siguientes términos y procedimientos:

1. Los productos están cubiertos por una garantía de 24 meses, vigente a partir de la fecha de compra del producto cubierto por un cliente minorista.
2. Para ejercer los derechos de garantía, el comprador debe presentar: a) Tarjeta de garantía, b) Comprobante de compra (factura con IVA, recibo financiero u otro documento que confirme la fecha real de compra), a menos que la fecha de compra del producto provenga de la tarjeta de garantía.
3. Si se producen problemas de calidad del producto dentro de los 24 meses a partir de la fecha de recepción, prepare el producto y el embalaje y vaya al lugar o tienda donde lo compró para solicitar el mantenimiento posventa. Si el producto se daña debido a razones personales, se cobrará una determinada tarifa de mantenimiento.
4. La garantía no cubre:
  - a) Daños mecánicos causados por culpa del usuario y defectos del producto causados por dichos daños.
  - b) Daños causados por un uso indebido del producto.

The logo for OMNIA features the word "OMNIA" in a bold, uppercase, sans-serif font. A small yellow square is positioned above the letter "O". A yellow line starts from the bottom left of the "O", extends horizontally to the left, and then turns vertically down to end in a small yellow circle.