

**OMNIA**  
Smart Devices



 matter

**Matter Smart Plug**  
Enchufe Inteligente Matter

**OMWP-LO-US15M**

# Contents

|                                |    |
|--------------------------------|----|
| Specification                  | 01 |
| Indicator Light Status         | 02 |
| Product Configuration          | 03 |
| Installation                   | 04 |
| Compatibility and Requirements | 05 |
| Tuya APP Add Instruction       | 06 |
| Home APP Add Instruction       | 27 |
| Google Home Add Instruction    | 41 |
| Amazon Alexa Add Instruction   | 56 |
| Others                         | 71 |

# Specification

---

Rated Power: AC 85 ~ 250V 50/60Hz

Standby Consumption: 0.5W

Wireless Type: 2.4GHz

Wireless Standard: IEEE 802.11b/g/n

Wireless Distance: 45M

Working Temperature: 0°C ~ 60°C (32°F ~ 140°F)

Working Humidity: 0% ~ 85%RH(Non-Condensing)

|          | Maximum Load Capacity | Product Size       |
|----------|-----------------------|--------------------|
| EU model | 3680W                 | 50mm x 50mm x 85mm |
| FR model | 3680W                 | 50mm x 50mm x 85mm |
| UK model | 3680W                 | 59mm x 59mm x 56mm |
| US model | 2000W                 | 82mm x 38mm x 50mm |

OMNIA

# Indicator Light Status

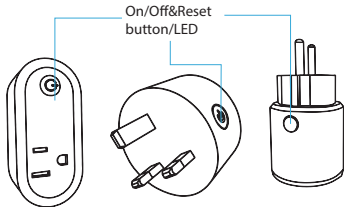
---

| <b>Devices Status</b>      | <b>LED Status</b>                          |
|----------------------------|--|
| Waiting Configuration Mode | Led flashes quickly(2 times/second)        |
| Waiting Configuration Time | Within 3 minutes                           |
| Device On/Off              | Led indicator on/off                       |
| Reset                      | Long press the on/off button for 5 seconds |



# Product Configuration

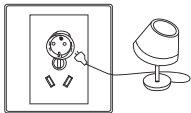
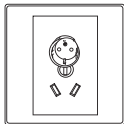
---



# Installation

---

- 1.Insert plug pins into socket ;
- 2.Device connect to app;
- 3.Turn on/off switch.



# Material Compatibility and Usage Requirements

| APP                 | Gateway Devices  | APP Version Requirements | Other Requirements   |
|---------------------|--|--------------------------|--|
| <b>Tuya Smart</b>   | No required  | V4.7.0 and above         |  |
| <b>Home</b>         | HomePod, HomePod mini, Apple TV and iPad   | iOS 16.0 and above       |  |
| <b>Google Home</b>  | Speakers: Google Home, Google Home Mini, Nest Mini, Nest Audio<br>Displays: Nest Hub (1st gen), Nest Hub (2nd gen), Nest Hub Max<br>Wi-Fi routers: Nest Wifi Pro (Wi-Fi 6E)  | 3.0.1.9 and above        | Android 8.1 and above<br>Google Play service 22.46.17 and above<br>Bluetooth low power consumption (BLE) 4.2 and above |
| <b>Amazon Alexa</b> | Echo Dot (5th Gen), Echo Dot (5th Gen) with clock, Echo (4th Gen), Echo Dot (3rd Gen, 2018 release), Echo Studio, Echo Show 8 (2nd Gen, 2021 release), Echo Show 10 (3rd Gen), Echo Show 5 (2nd Gen, 2021 release), Echo Show 15, Echo Dot (Gen 3 with Clock), Echo Dot (Gen 4 with Clock), Echo Show 5, Echo (v3), Echo Dot Gen 4, Echo Input, Echo Flex, Echo Show 8, Echo Plus (V2), Echo Dot (V2), and Echo V2 | 2.2.536317 and above     |  |

# Tuya APP Add Instruction

---

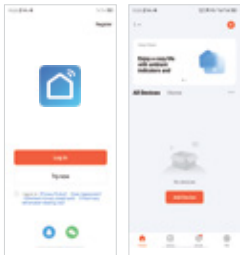
## Download APP

- 1.Android system: Download "Smart Life"APP from GooglePlay to your mobile;
- 2.IOS system: Download "Smart Life"APP from App Store to your mobile.



## Register and login

- 1, Run the application from your smartphone.
- 2, Register and login

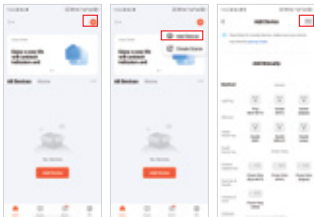


## Add Device

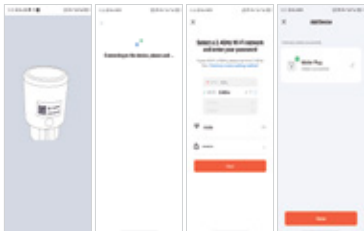
The default state of the device is Waiting Configuration Mode(LED flashes );if the reset button is off, please long press the reset button for 6 seconds,then add the device.

*Note: The device only supports 2.4GHz WiFi type,please open the Bluetooth before adding.*

1. Choose "Add Device",scan the QR code on the device;



## 2.Scan the QR code of the device ,wait for WiFi Configuration



## Function Interface

### APP main interface

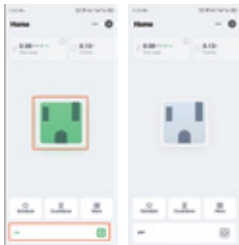


The state  
of on/off&  
Status  
display

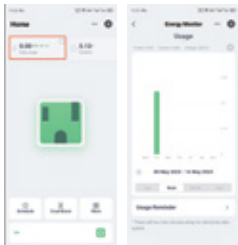


## Function

### 1.On/Off Button



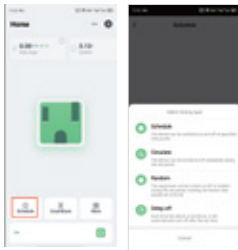
## 2.Power Consumption Record



### 3.Operation Time



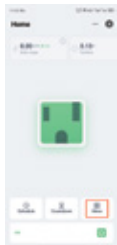
## 4. Timing Function/Schedule



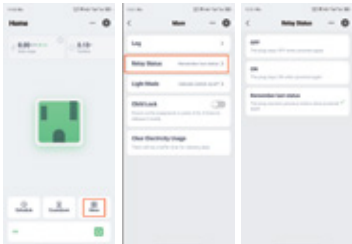
## 5.Countdown Function



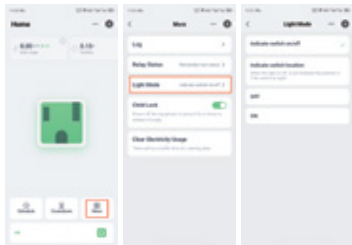
## 6.Log



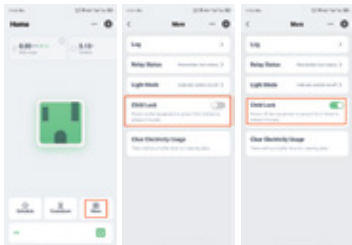
## 7. Relay Status



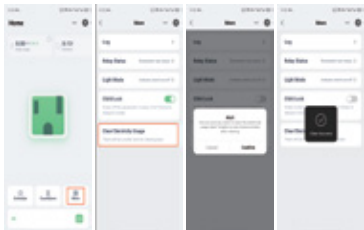
## 8.Light Mode



## 9. Child lock



## 10. Clear Electricity Usage

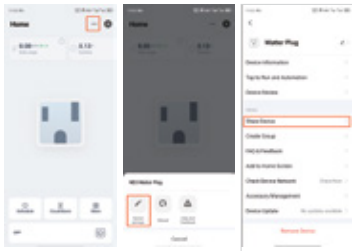


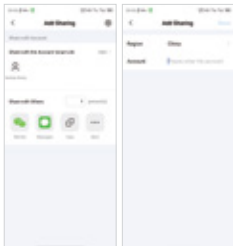
## Delete&Reset



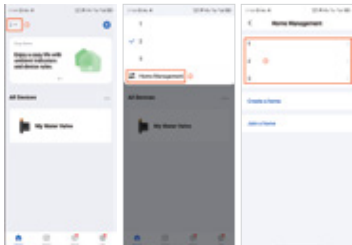
# Share Device

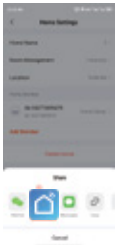
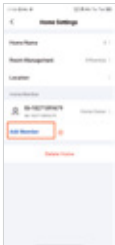
## (1) Single Device Sharing





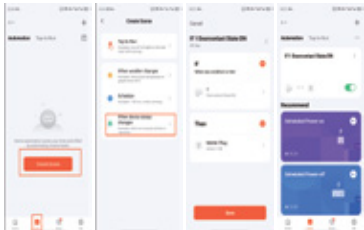
## (2) Home Settings





## Scene Linkage

Eg: When the door sensor detects door is opened, then the plug will be turned on in their scene linkage.



# Home APP Add Instruction

---

## Attention:

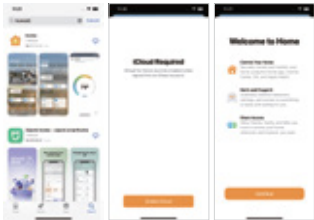
- ① Please make sure the IOS system of the mobile is above 16.1;
- ② A smart home hub must be set(eg: HomePod,HomePod Mini,Apple TV or iPad),then the Matter devices can be added into "Home"App.
- ③ The configured Wi-Fi must be on the local Area Network (LAN) with the hub.
- ④ Please open Bluetooth before adding firstly.



## APP Download

(1) Please open APP Store, then search "HomeKit" and download the APP.

(2) Please open the APP and login in via local iCloud account after the download has completed.



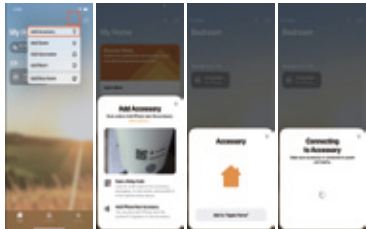
## Add device

The default state of the device is waiting configuration mode(LED flashes );Non configuration mode,please long press the reset button for 5 seconds,then add the device again.

**Note:** The device only supports 2.4GHz WiFi type and must be added via a smart home hub.



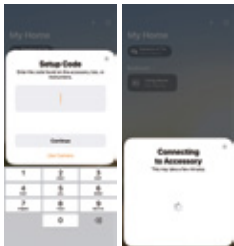
## Scan the QR code of device for adding



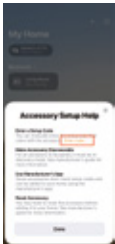
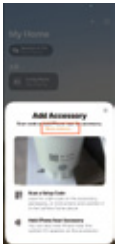
a. App will search the nearby device automatically, then click the icon of the device, input the serial number for adding.

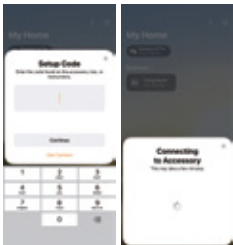




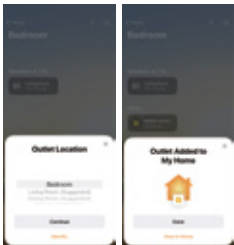


b. If the app does not search the device, please click "My Accessory Isn't Shown Here". Then input the serial number for adding.





## Add completion

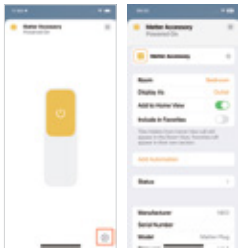


## APP Interface

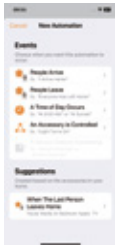


## Function Settings

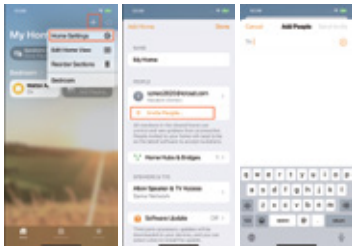
Modify device name and room location



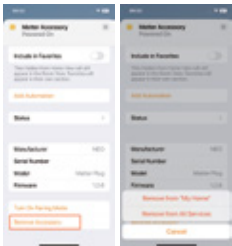
## Automation Settings



## Home Settings



## Delete the device



# Google Home Add Instruction

---

## Note :

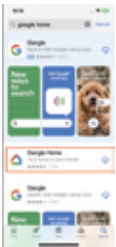
- ① A "Matter enabled hub" must be set up in order to add Matter devices to the 'Google Home' app ;
- ② Configured WiFi network and Matter-enabled hub must in the same local area network(LAN) ;
- ③ Please open the Bluetooth in the phone before adding firstly.

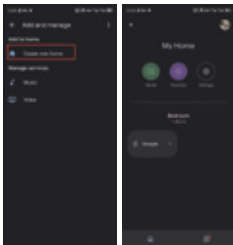
## APP Download

- 1.Android system: Please download "Google Home"App from GooglePlay ;
- 2.IOS system: Please "Google Home"App from AppStore.



3. Please sign in, create a home , and add **Matter-enabled hub** (Please refer to Google device instructions)

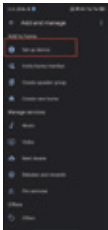
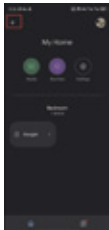


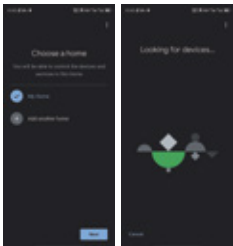


## Add Device

The default state of the device is waiting configuration mode(LED flashes );  
Non configuration mode,please long press the reset button for 5 seconds,  
then add the device again.

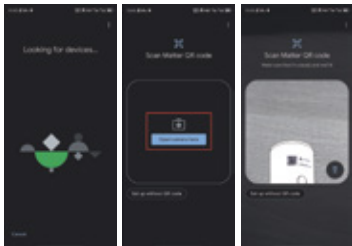
**Note: The device only supports 2.4GHz WiFi type and must be added via a Matter-enabled hub.**





OMNIA

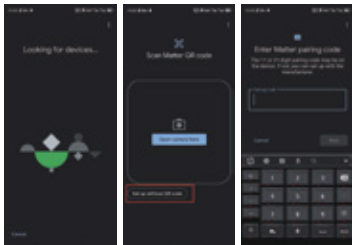
## Scan the QR code of device for adding





OMNIA

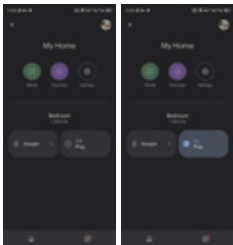
## Add device via serial number



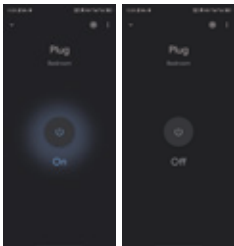


OMNIA

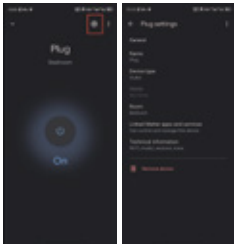
## Add completion



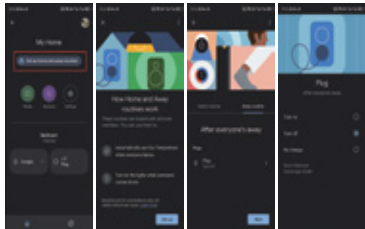
## APP Interface



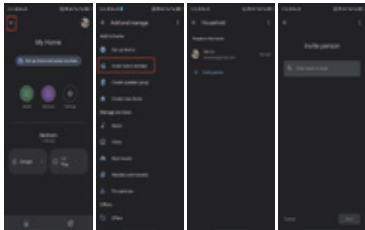
## Function Settings



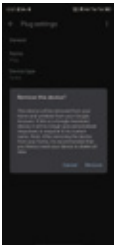
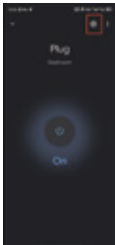
## Automation Settings



## Home Settings



## Delete the device



# Amazon Alexa Add Instruction

---

## NOTE:

- ① Please set up an Echo device that is compatible with Matter (Echo devices with built-in Matter support) in order to add Matter devices to "Amazon Alexa"App;
- ② Configured WiFi network and "Echo" must in the same local area network(LAN);
- ③ Please open the Bluetooth in the phone before adding firstly.

## APP Download

- 1.Android system: Please download "Amazon Alexa"App from GooglePlay; ;
- 2.IOS system :Please "Amazon Alexa"App from AppStore.

3. Please sign in, create a home , and add "Echo" compatible with Matter. (Please refer to Amazon device instructions)



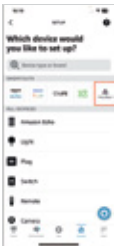
## Add Device

The default state of the device is waiting configuration mode(LED flashes );Non configuration mode,please long press the reset button for 5 seconds,then add the device again.

### NOTE:

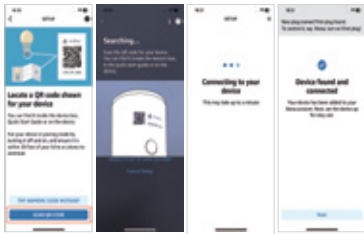
The device only supports 2.4GHz WiFi type and must be added via a "Echo"compatible with Matter .







## Scan the QR code of device for adding

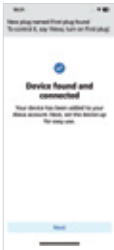


## Add device via serial number





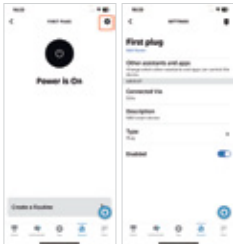
## Add completion



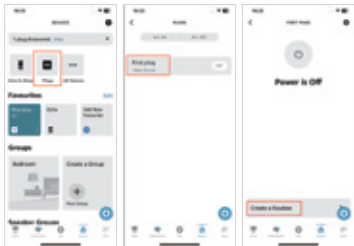
## APP Interface



## Function Settings

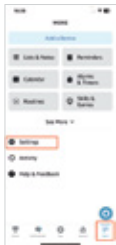


## Automation Settings

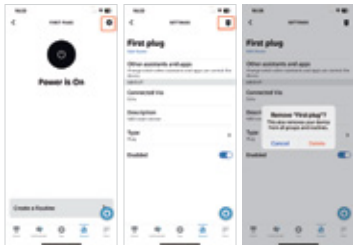




# Home Settings



## Delete the device



# Others

---

Simultaneous use of multiple apps that support Matter  
(After the device has been added via an App, then it can be added via other App channels.)

**NOTE :**

Please ensure the App channel and the device in the same local area network(LAN).

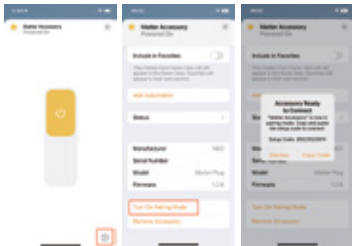


# Tuya APP

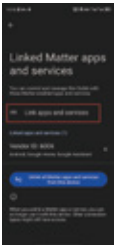
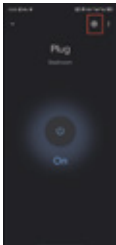


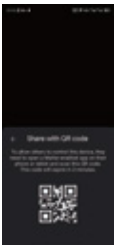
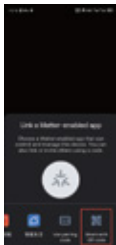


# Home APP



# Google Home APP





# Amazon Alexa APP

